

# PARK CITY Technical Rider

produced by Yamaguchi Center of Arts and Media (YCAM)  
together with Marebito-No-Kai, Photographers' Gallery  
& Biwako Hall Foundation

13 October 2009 1:26 PM

note This technical rider is meant for the staging of Park City(the production) in Yamaguchi Center of Arts and Media. Thus these information is only served for your reference. But we can always rework the technical details to fit into your venue or any intended venue you had in mind. Should you have any queries in these, please consult either the production, technical or the stage manager. Their contacts can be found at the end of this technical rider.

Voltage requirements for all our electronic equipments is between 100v - 110v. Should it be different to your venue standards, please provide the necessary transformers and refer the following relevant technical details for more details.

personnel travelling 1 Director, 1 Lighting Operator (who knows the lighting plan well), 1 Production Stage Manager, 1 Multimedia Operator & Programmer, 1 Sound Engineer & Operator and 1 slide projector operator and 10 casts (5 female and 5 male).

minimum manpower requirements from the venue

Department	Setup & Rehearsal	Performance	Strike
Staging	4	2	4
Lighting	4	1	4
Sound	4	2*	4
Multimedia	3	2	3
Wardrobe	1	1	1

- \* For the multimedia crews, please make arrangement for 1 surtitle operator + 1 crew (on deck) during performances.
- \* This is important - Ideally, we would prefer the control booth to be in an open area. This means that operating for the performances will preferred NOT to be done inside any operating booth or control room. However, we do understand at times such request can be difficult to fulfil as theatre varies. So please do consult the production, technical or stage manager for the position of the control booth. Contacts can be found at the end of this technical rider.
- \* Duration of the performance : approx 90mins (without intermission).
- \* We will need to refer to your venue technical specification before we can map out our production schedule

staging A blackbox space with around 32m in width, 35m in depth and 9m in height(audience seating inclusive) will be ideal, else a theatrical hall with the same dimensions as mentioned above will be preferred as well. Details of these informations are as follow.

Acting Area : 20m width x 25m deep x 9m high

Stage Area : 32m width x 35m deep x 9m high

Flooring : Wooden Flooring would be preferred.

Rigging : Flying mechanism will be preferred, else we can survive with the pipe grid system.

Masking : NO maskings around the stage is required. If this production were to stage at theatre where there's allocated storage spaces for equipments at stage left and right of the stage, the director will like to expose it. However borders for the lights fixtures at flybar are necessary.

Audience : Audience will be seated at 6m above the ground level of the acting space and 4m away from the downstage edge of the acting space. The audience seatings is excluded outside the stage area. Please refer to the audience seating arrangement located in the staging section in this technical rider for more details.

produced by  
Yamaguchi Center  
of Arts and Media (YCAM)  
together with  
Marebito-No-Kai ,  
Photographers' Gallery &  
Biwako Hall Foundation

.....

All the above mentioned details can be found in the plans as attached below for your easy reference. Please refer to the attached diagrams(Stage Plan A & B) for the more details.

3D schematic of the experimental setup. The setup includes a 9000mm x 32850mm floor area, a 35895mm x 6300mm back wall, and a 6300mm high shelf. A 3D object is placed on the floor, and a 2D image is projected onto the wall. A 3D coordinate system is shown in the bottom right corner.

In the plan, you can see the audience area at level 3 which is measured at 6.3m and the control area for the technical team, measured approximately 3.8m. Both point of reference are from the ground level of the seats and control area to the ground level of the stage.

The tinted blue region fall outside the acting area is where the casts standby and the props stationed, especially where those dark blue long rectangular are. Those are the area where we need props tables.

# PARK CITY Technical Rider

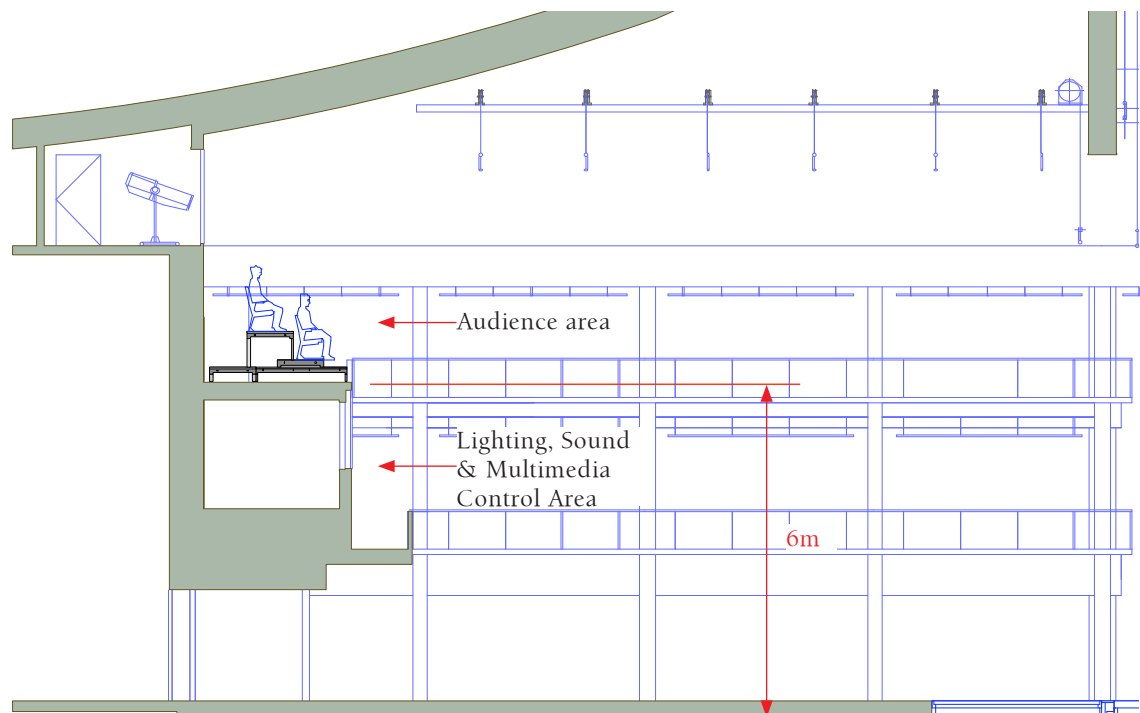
produced by  
Yamaguchi Center  
of Arts and Media (YCAM)  
together with  
Marebito-No-Kai ,  
Photographers' Gallery &  
Biwako Hall Foundation

13 October 2009 1:26 PM

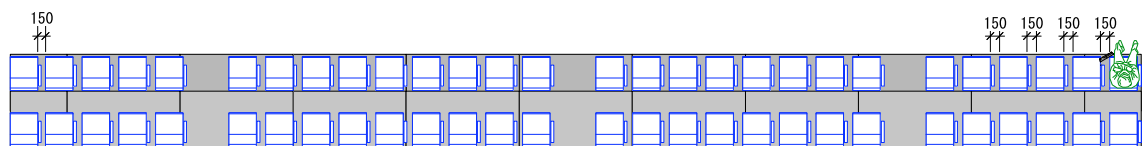
staging  
cont'd

## Audience Seating Arrangement

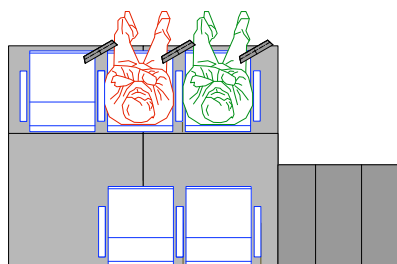
Due to the concept of this production, the seatings for the audience are deliberately designed to be 6m above the stage (ground level) and each seats will be equipped with individual video monitor screen which the details will be briefed under the multimedia section. Please refer to the following side view section of the seating area in the studio A for details.



In YCAM, the seats are designed to be at 15cm apart so that to allow the video monitor stands to be place at either the left hand side or the right hand of the seats and also allowing the audience to view the video footages through the monitor without



seating plan A



seating plan B

In the seating plan A and B show the seating layout in YCAM. There's 2 rows of seats and the seating capacity is 56.

The distance between the first and second row is approximately 30cm. Video monitors will be placed on either the left hand or the right hand side of the seats and the video stands are fixed to the ground. Details for the monitors, monitors stands and it positioning will be briefed under the multimedia section.

# **PARK CITY Technical Rider**

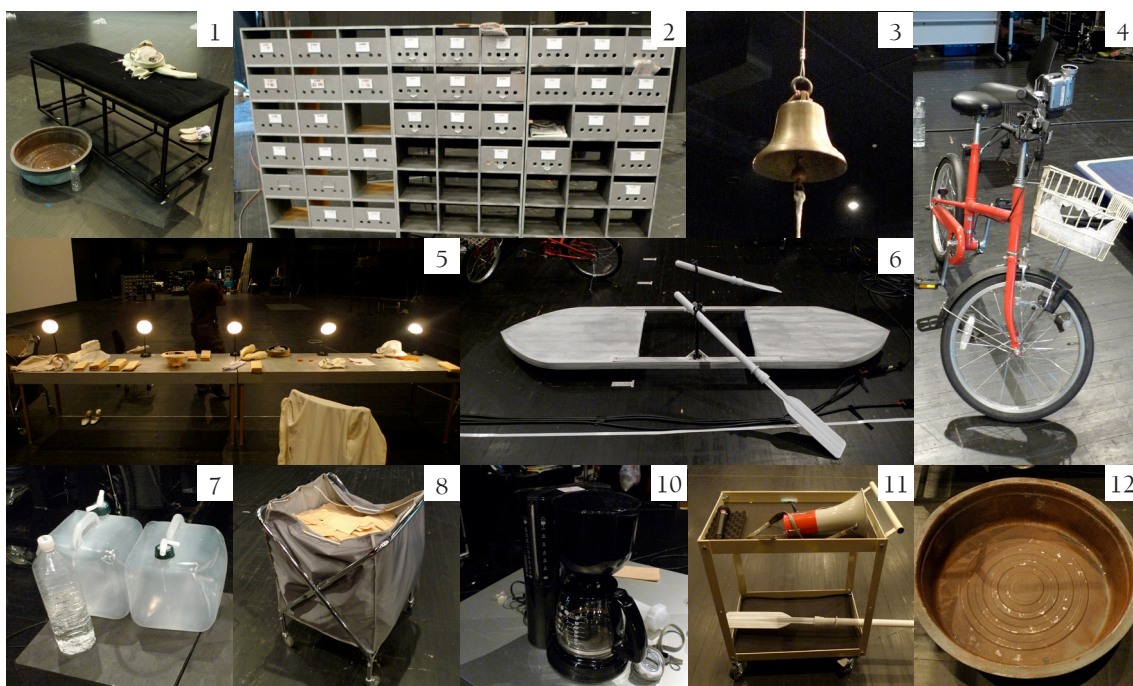
produced by  
Yamaguchi Center  
of Arts and Media (YCAM)  
together with  
Marebito-No-Kai ,  
Photographers' Gallery &  
Biwako Hall Foundation

13 October 2009 1:26 PM

staging  
cont'd

## Sets and Props

Here the list of sets and props that i will require the venue assistance to provide. All except item 2 which still need to fabricate as its too fragile to travel, the rest we will be able to pack it and send it across.



S/No	Items	Qty	Remarks
1	Stretches	1	refer to the technical personnel for construction
2	Mailboxes	3	refer to the construction drawing attached.
3	Bicycle	1	112cm width and 82 cm to seat with a basket infront
4	2 Tables with 1 chair & 5 tablelamps	2	silver table top, approx 195cm width, 67cm deep and 71.5cm tall for each. Chair provided need to come with wheels
5	Bell	1	Diamenter of the bell bottom is approx 20cm. Bell is to be hang onto the flybar or grid approx 2m off the ground
6	Wooden Boat for 2 people	1	With wheels and 2 white oars, refer to the construction drawing attached
7	Water Containers	12	10 1-litres plastic bottles & 2 3-gallons containers
8	Mail Bag	1	Approx 65cm(square) by 91cm tall. Ikea laundry bag will do
9	Helium Gas	1	Need it to fill up the balloon of 110cm in diameter. (no pic)
10	Coffee Machine & square table	1	Black coffee machine & a table around 90cm width x 90cm deep x 70cm height
11	Trolley & Portable Loud Hailer	1	1 trolley size of 68cm x 46cm x 82cm in height, with 4 10cm wheels attached and 1 portable loud hailer with mic receiver separated from the hailer.
12	metal old water basin	1	around 65cm in diameter. rusted bin will be preferred.

**PARK CITY  
Technical Rider**

produced by  
Yamaguchi Center  
of Arts and Media (YCAM)  
together with  
Marebito-No-Kai ,  
Photographers' Gallery &  
Biwako Hall Foundation

13 October 2009 1:26 PM

staging  
cont'd

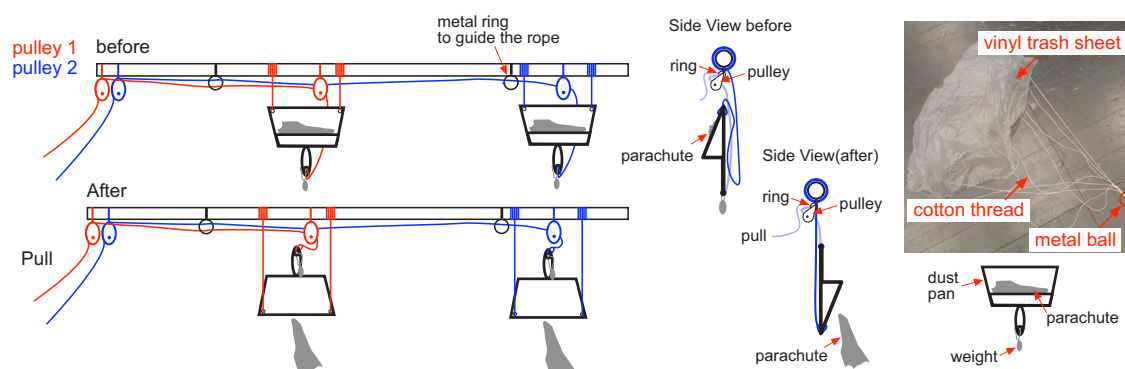
**Sets and Props cont'd**

In addition to the list of sets and props, we will require the venue to provide the followings as well:

- 2 Props tables, 2m x 1m each, stage left and stage right, covered with black cloth.
- 3 tables of the size of 2m x 1m each for lighting, multimedia and sound Operating console area.  
1 table of the size of 1m x 1m for stage manager. All tables need to be covered with black cloth.

Information that might be helpful.

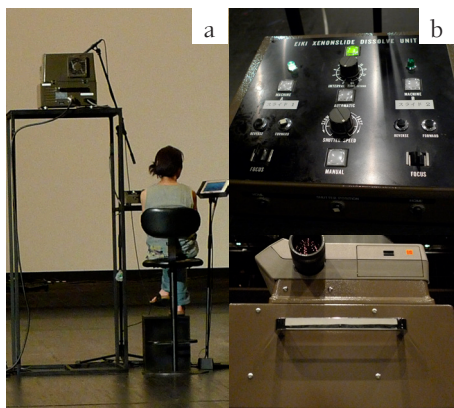
- There will be 2 water scenes on stage which lasted around 5 - 7 mins each. Water will spilled onto the stage.
- There will be around 12 parachutes(handmade) that need to be hang onto the grid or flybar. Pulley system needed. During the performance, some of these parachutes will be release from the grid or flybar. Please find the attached picture and drawing below for reference.



multimedia

Multimedia play an important role in this production, thus most of the items listed next page and the followings under multimedia section are not replaceable and all the items mentioned are going to be provided from our side, except for the video cameras, the projection screen and the xeon slide projector. Please check with the technical personnel concerned about the availability of the cameras before confirming the freight.

**Slide Projector Details**



35mm Xeon Slide Projector  
EIKI EX-1000ATD  
80 empty slots for the slide.  
Voltage : AC100 - 240V  
Cycle : 50 - 60Hz  
Lamp : 1000w  
Total VA : 2.2KVA

This projector will need to come with a separate controller (pic b) and to be placed on the specially made stand(pic a). Please refer to the pictures(left) and the plan attached at the end of this technical rider for fabrication.

\*If you can provide the above mentioned projector, it will be great. If cant, please help to look for the slide projector of the closet specification as this. In the case of doubt, please do consult our technical personnel.



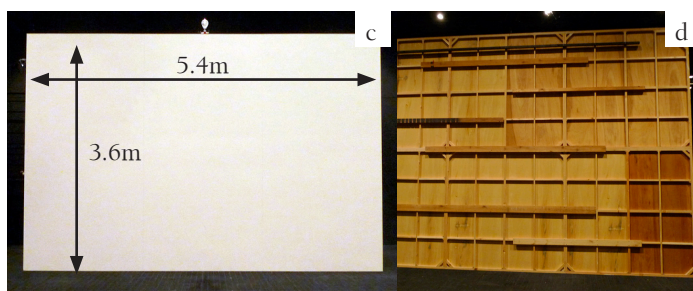
13 October 2009 1:26 PM

multimedia  
cont'd

## Projection Screen

The projection screen that we used for PARK CITY production in YCAM is made up of 3 wooden panels, painted in white for the projection. The reason why choose to fabricate and not using those professional kind of projection screen available in the market is the black border around it. I have attached the following drawings and pictures (pic c & d) for your reference.

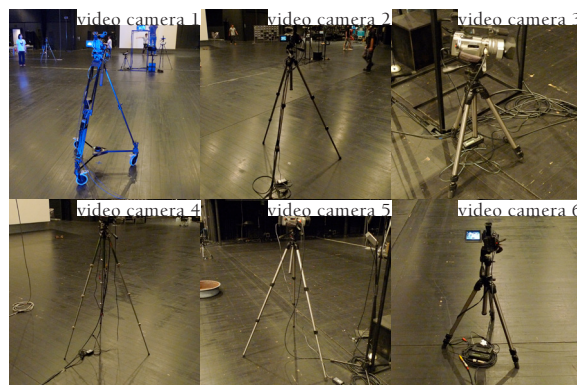
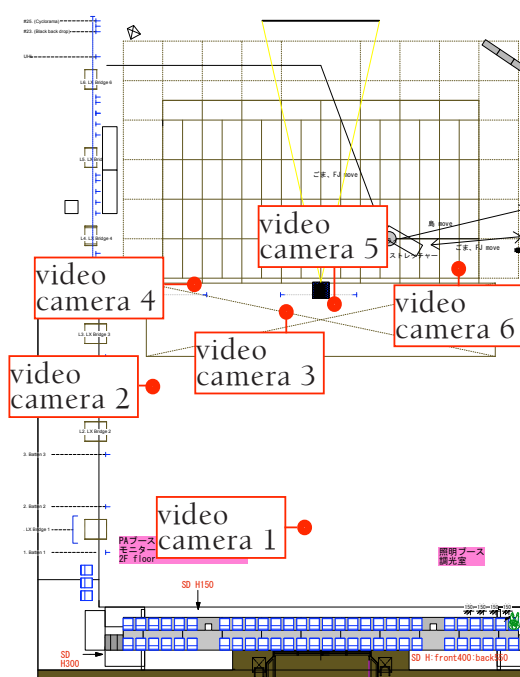
The dimension of the screen is 5.4m width x 3.6m height. And in YCAM, the screen is off the ground by 0.45m. The screen is rigged at 3 points of the screen (left, center & right) with black wire rope to the flybar. The distance between the slide projector and the screen will be highlight in the stage plan attached at the end of the tech rider.



## Video Cameras

There are total 6 cameras being used in this production. As stated earlier, we will require the venue assistance in providing the cameras. The output for these 6 video cameras is to be composite and the mapping of the video camera system will be illustrated at the following page. All cameras have to be 16:9 format and one of the camera needs to have the night vision function.

Please refer to the plan shown in the following for the positions and the details.



Video camera 1 (16:9). On tripod with moveable wheels. During one scene, the position will change to somewhere near video camera 6.

Video Camera 2 (16:9). On tripod, still.

Video Camera 3 (16:9). Low tripod stand, still.

Video Camera 4 (16:9). On tripod, still, night vision.

Video Camera 5 (16:9). On Tripod, still

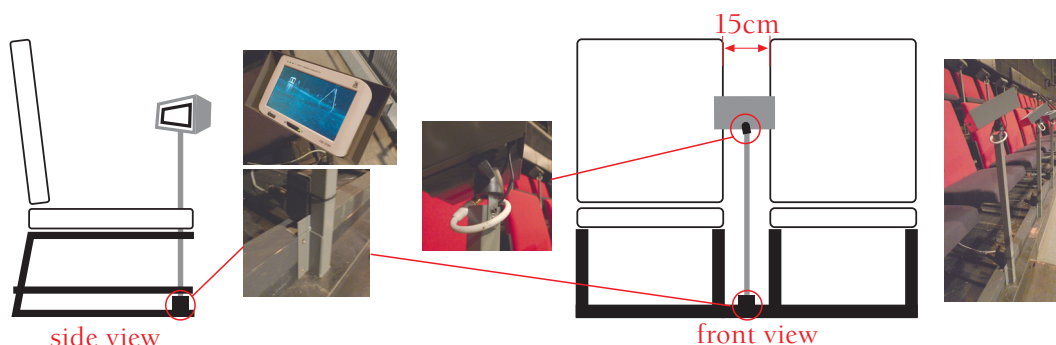
Video Camera 6 (16:9). On low tripod, still

On the top left, is the diagram where it illustrate the positions of video cameras. Please refer to this diagram as a guide. The mapping of the multimedia systems are to be referred to the line drawing diagram of the multimedia system that is attached at the following page after the section "Video Monitors and Stands".

.....

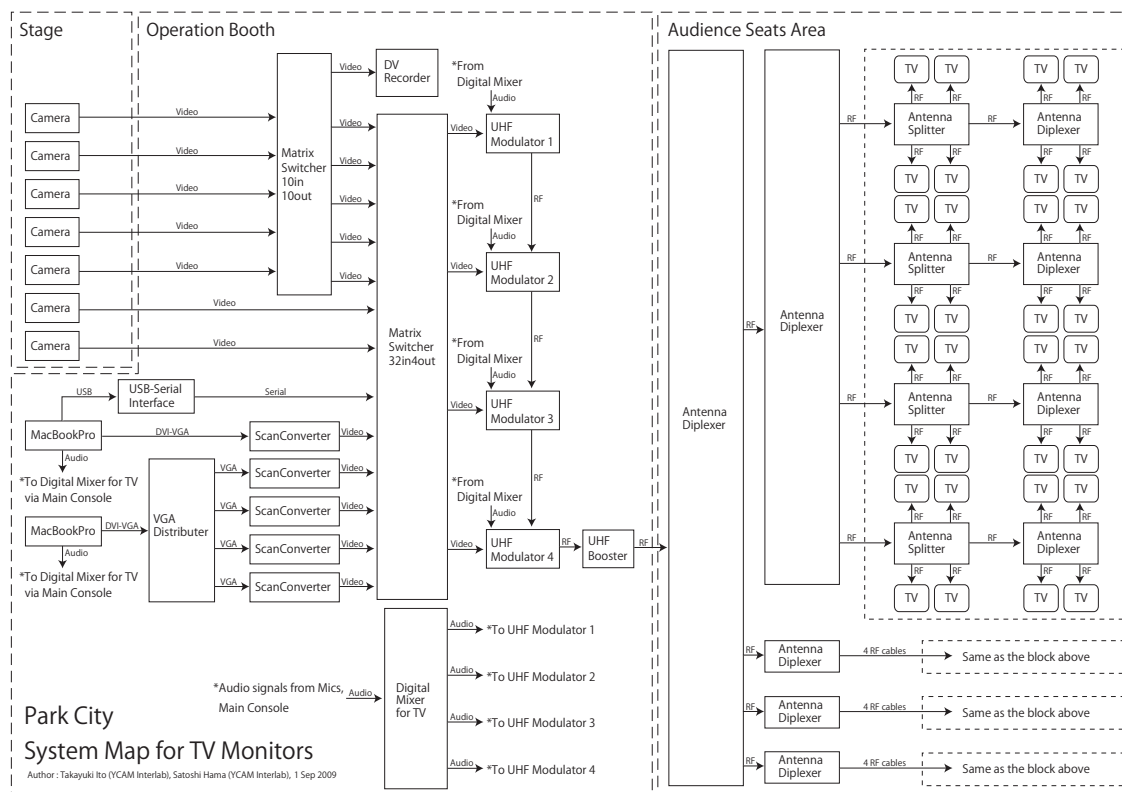
## Video Monitors and stands

This is another important element of this production, the video monitors. These video monitors are attached to the sides of the seats A total of 62 video monitors are used for the audience and 1 for the stage manager, 4 for multimedia operator, 1 for sound operator, 1 for lighting operator, 1 for slide projector operator. Please refer to the below diagrams and pictures.



Please do note that the above installation is meant for temporary seatings configuration. Should this kind of installation not allowed in the venue, please do send us the seating plan and pictures, we will rework on the design for the video monitor stands.

Each video monitors has it own power cable and RF cable for the video and sound signal. Please refer to the attached line drawing diagram for this video configurations.



As mentioned earlier, all these above mentioned equipments in the line diagram, less the 16:9 format video cameras, can be brought in by us. Please check with our technical personnel for more details.

**PARK CITY**  
**Technical Rider**

produced by  
Yamaguchi Center  
of Arts and Media (YCAM)  
together with  
Marebito-No-Kai ,  
Photographers' Gallery &  
Biwako Hall Foundation

13 October 2009 1:26 PM

sound Please refer to the below mentioned for the list of sound equipments that needed for this production. In the case where the venue couldnt provide the sound equipments as requested or are relevant in terms of specification, do check with our technical personnel concerned for the alternative solutions.

Speaker System	House : Qty 8, d&b E9 with Amplifier : E-pac : Qty 6, d&b F1222 with Amplifier : A1 + Qty 3 unit BSS OMNIDRIVE : Qty 2, d&b B1-SUB with Amplifier : A1 : Qty 4, Noboru NK-120 with Amplifier : 15w - 30w : Qty 2, UNI-PEK CK-315 with Amplifier : 15w - 30w  Stage Monitor Speaker System : Qty 4, d&b E9 with Amplifier : E-pac : Qty 4, L-Acoustics MTD115 with Amplifier L-Acoustics La24a + Qty 2 unit L-Acoustics LLC-115b  Operating Booth Monitor Speaker System : Qty 2 Meyer UPM-1P
Sound Console	: Yamaha DM2000 (House Sound console) : Mackie Tapco (for sound desk monitors UPM-1P)
Playback	: Qty 2 Tascam CD 450 Qty 1 Tascam HD R1 or Live in Macbook Pro with M-AUDIO Lightbridge (this shall be the alternative if the venue cant provide the CD and HD player mentioned above. Do let us know earlier)
Microphone	Headset ravelier mics for casts : Qty 9 DPA 4061 Qty 1 DPA 4066  For Effects : Qty 1 AKG C391B (for slide projector) : Qty 1 Sennheiser MKH416 (postal office desk)  For Director, Operator booth(where sound and video are) and audience area which is of different area from the operating booth(during setup & rehearsal) : Qty 3 handheld wireless mics
Intercom	Setup, Technical Run, Rehearsal and Full Dress : 11 intercom units. 2 for sound, 2 for video monitor, 4 for lighting and 3 for staging  Show : 5 intercom units. 1 for sound, 1 for video monitor, 1 for lighting and 2 for staging.

To help you further, we have prepared 2 sound plans for your reference, i.e. Sound System Map and the Speakers' position plan. At the following page, attached is the Park City sound system map for your reference. Please refer to this plan as your guide for the setup. As for the positioning of the speakers, please refer to the speaker plan which is attached at the end of this technical rider.

\*Note : Video monitor systems do come with their own built in speakers. Sound from the video footages will be projected via the built in speakers.



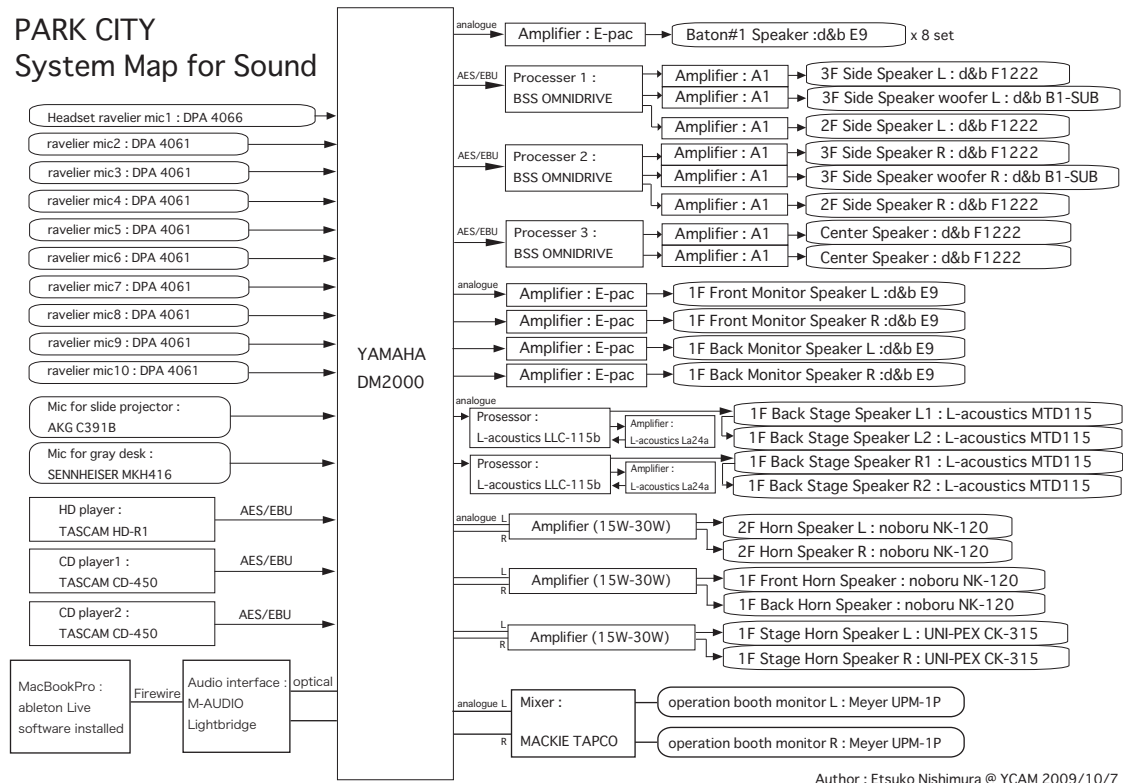
## PARK CITY Technical Rider

produced by  
Yamaguchi Center  
of Arts and Media (YCAM)  
together with  
Marebito-No-Kai ,  
Photographers' Gallery &  
Biwako Hall Foundation

13 October 2009 1:26 PM

sound cont'd

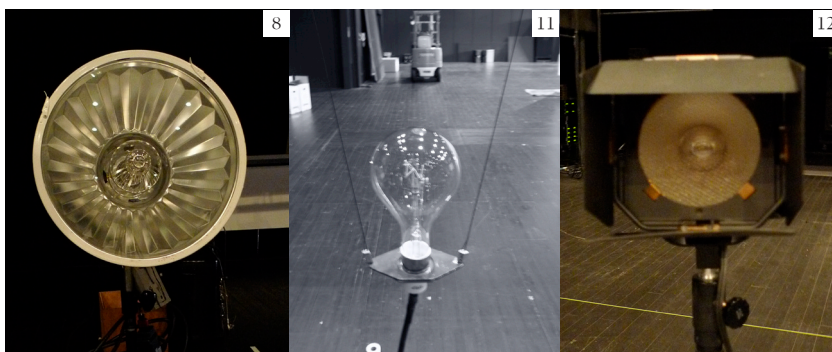
### PARK CITY System Map for Sound



Author : Etsuko Nishimura @ YCAM 2009/10/7

lighting

Lighting for this production is straightforward. Below mentioned is the list of lighting equipments that we needed for Park City.



Unit No	Amount	Fixture Type	remarks
1	3	19 degrees Profile, 750w	
2	27	26 degrees Profile, 750w	
3	24	36 degrees Profile, 750w	
4	64	PC, 1kw	
5	5	PC, 500w	
6	5	PAR medium, 1kw	

**PARK CITY**  
**Technical Rider**

produced by  
Yamaguchi Center  
of Arts and Media (YCAM)  
together with  
Marebito-No-Kai ,  
Photographers' Gallery &  
Biwako Hall Foundation

13 October 2009 1:26 PM

lighting  
cont'd

7	64	PAR narrow, 1kw	
8	2	mersly lamp, 400w	With dimmer shutter. Can be replace with 1KW HMI.
9	65	Fresnel, 1kw	22 barndoor
10	8	Fresnel, 2kw	8 barndoor
11	5	bulbs	
12	1	video light	300w with stand (adjustable height)

Lighting Board used : Avolite Pearl Expert or something with equilaent specifications.

Please refer to the lighting plan attached at the end of this technical rider.

backstage  
requirement

**Dressing Room**

There will be a total of 16 personnel travelling for this production. Please refer to the below mentioned for the arrangement of the dressing rooms.

Director	1 office room	• with internet or wireless lan
Slide projector operator	1 office room	• with internet or wireless lan
technical team	1 office room that can hold 5 personnel	• with internet or wireless lan
Female Casts	1 dressing room that can hold 5 personnel	• with internet or wireless lan • toilet & shower facilities • full length mirrors
Male Casts	1 dressing room that can hold 5 personnel	• with internet or wireless lan • toilet & shower facilities • full length mirrors

**Rehearsal Room**

We will need a rehearsal room with full length mirrors and a portable cd player on the 1st and 2nd of the setup days for 6hrs each. The rehearsal room will be preferred to be near to the dressing room.

**Wardrobe service**

Please arrange a wardrobe personel to attend to washing, dry cleaning, ironing and maintenance services. Call time shall be determine by the stage manager. Please refer to the attached production schedule for the wardrobe personel's call time.

**Welfare**

Please provide 10 dry and clean towels daily for the casts at the dressing rooms and refreshment like mineral water, hot tea, coffee, fresh fruits and etc at the welfare corner of the backstage area and replenish it whenever the refreshment is running low.

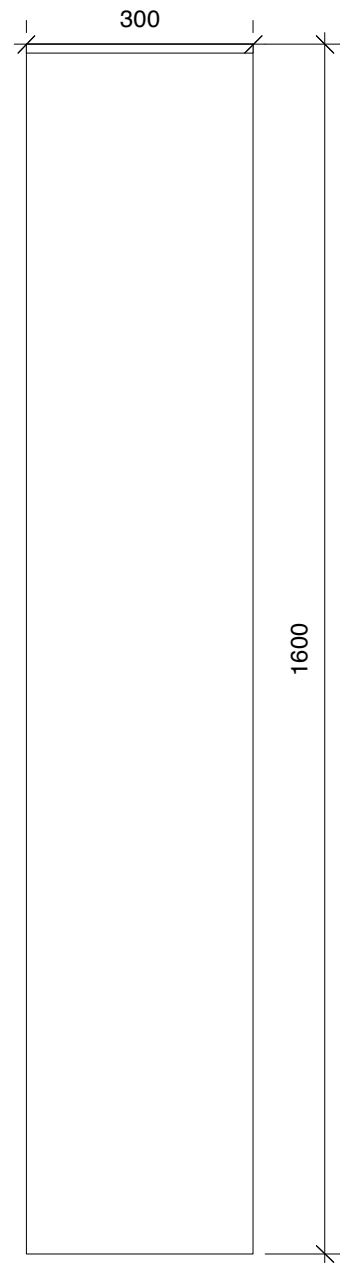
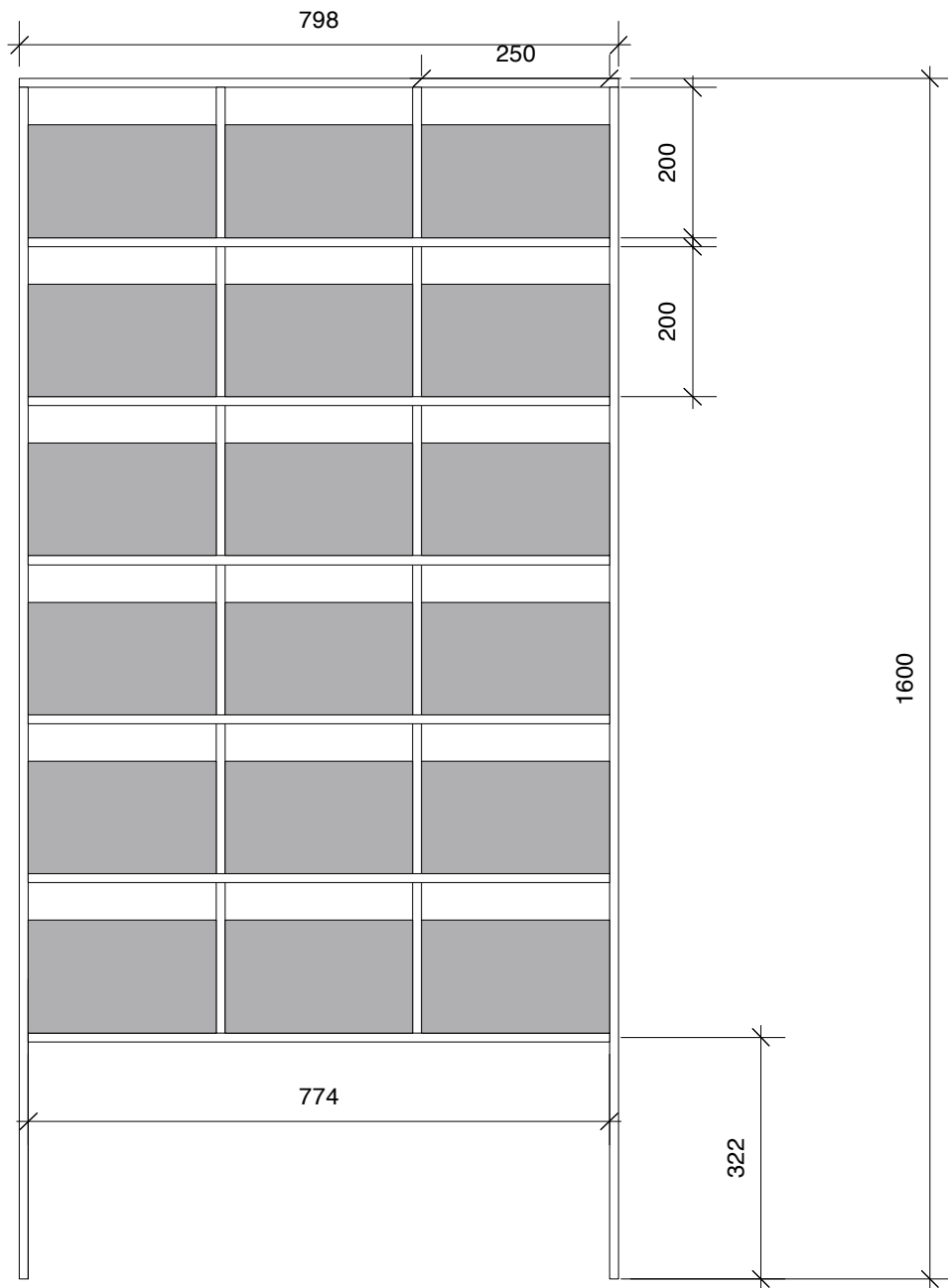
production  
contact

Here's the list of production personnel that you can liaise with regards to any queries to Park City.

Producer  
Akiko Takeshita  
takeshita@ycam.jp  
Tel: +81-83-901-2223 (122)

Chief of YCAM Interlab  
Ito Takayuki  
taka@ycam.jp  
Tel: +81-83-901- 2222

Production Stage Manager  
takuro iwata  
taku@ycam.jp  
Tel: +81-83-901-2223 (171)

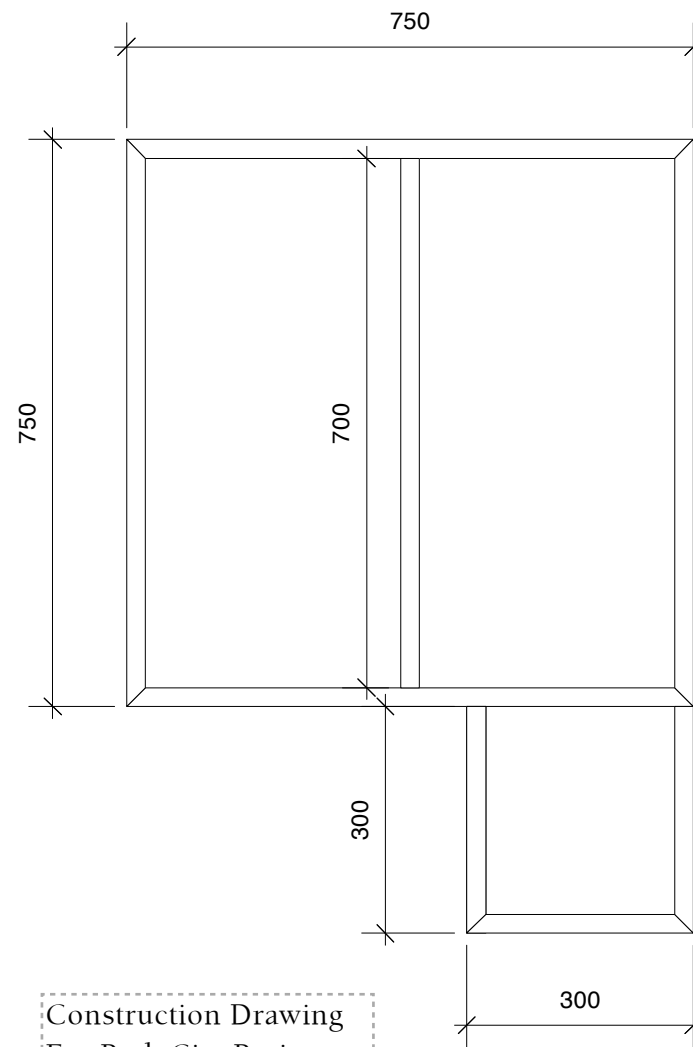
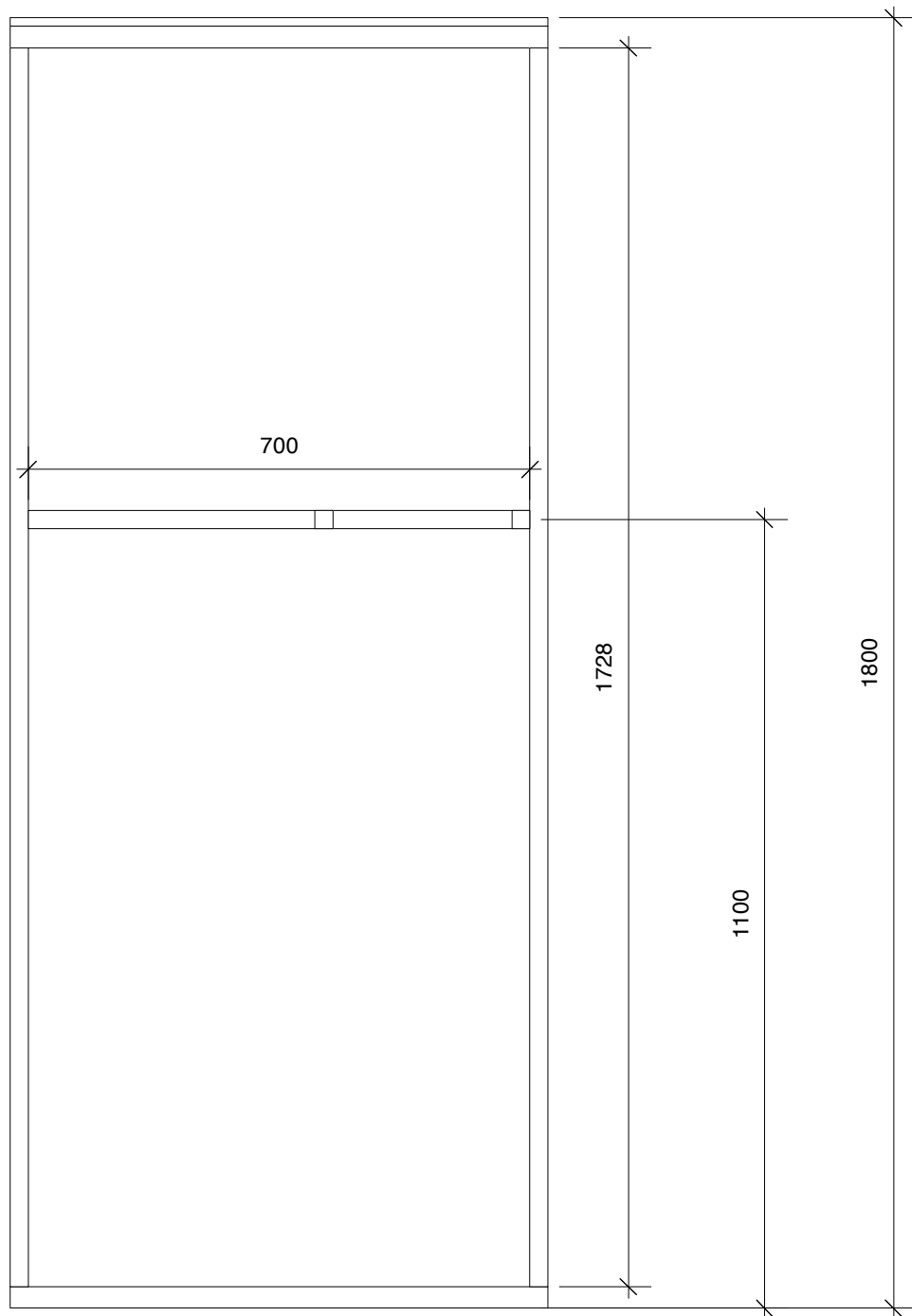


Construction Drawing  
For Park City Mailboxes  
Qty 3

PARK CITY  
ポスト 仮

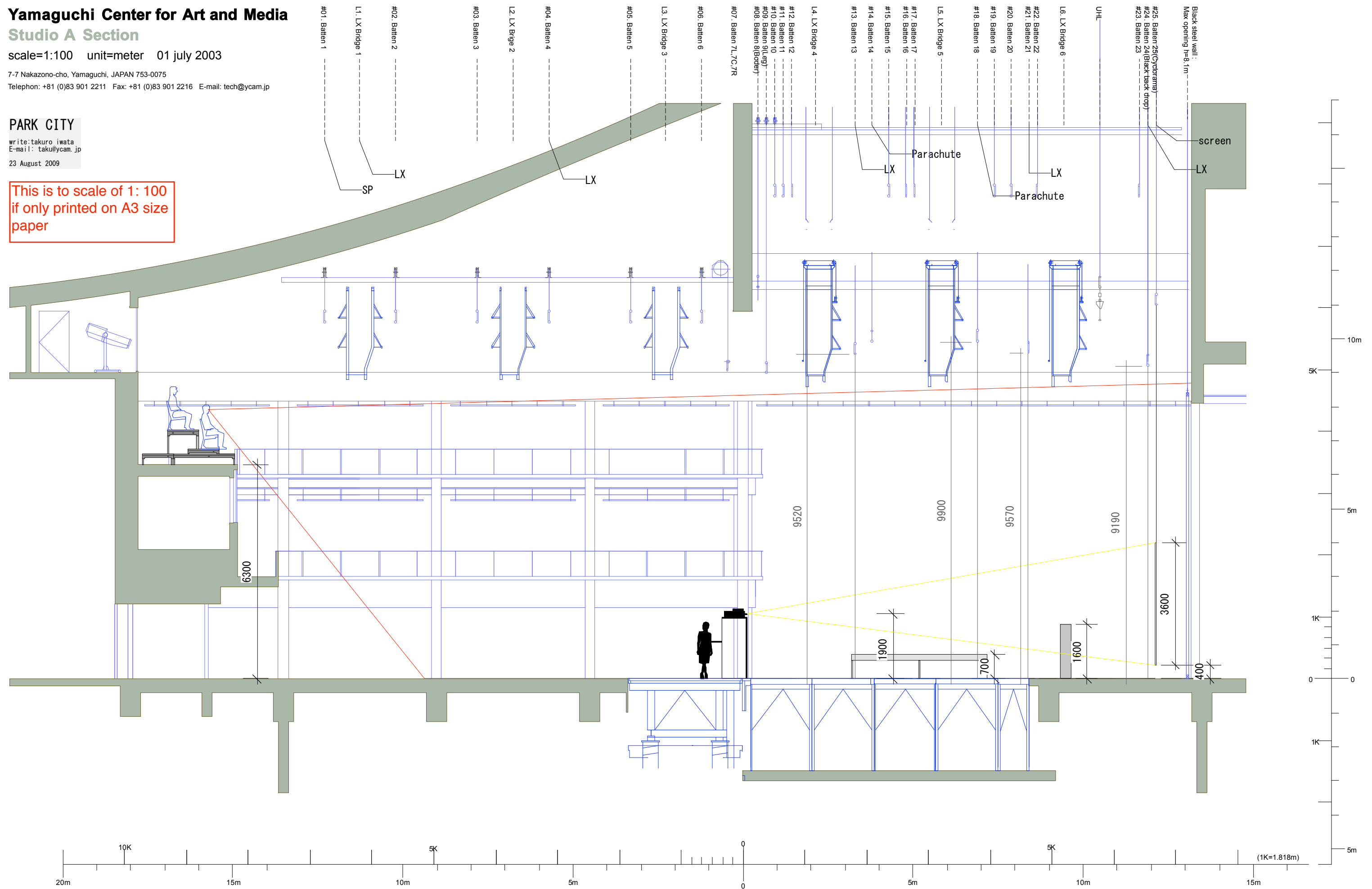
1:20

takuro iwata

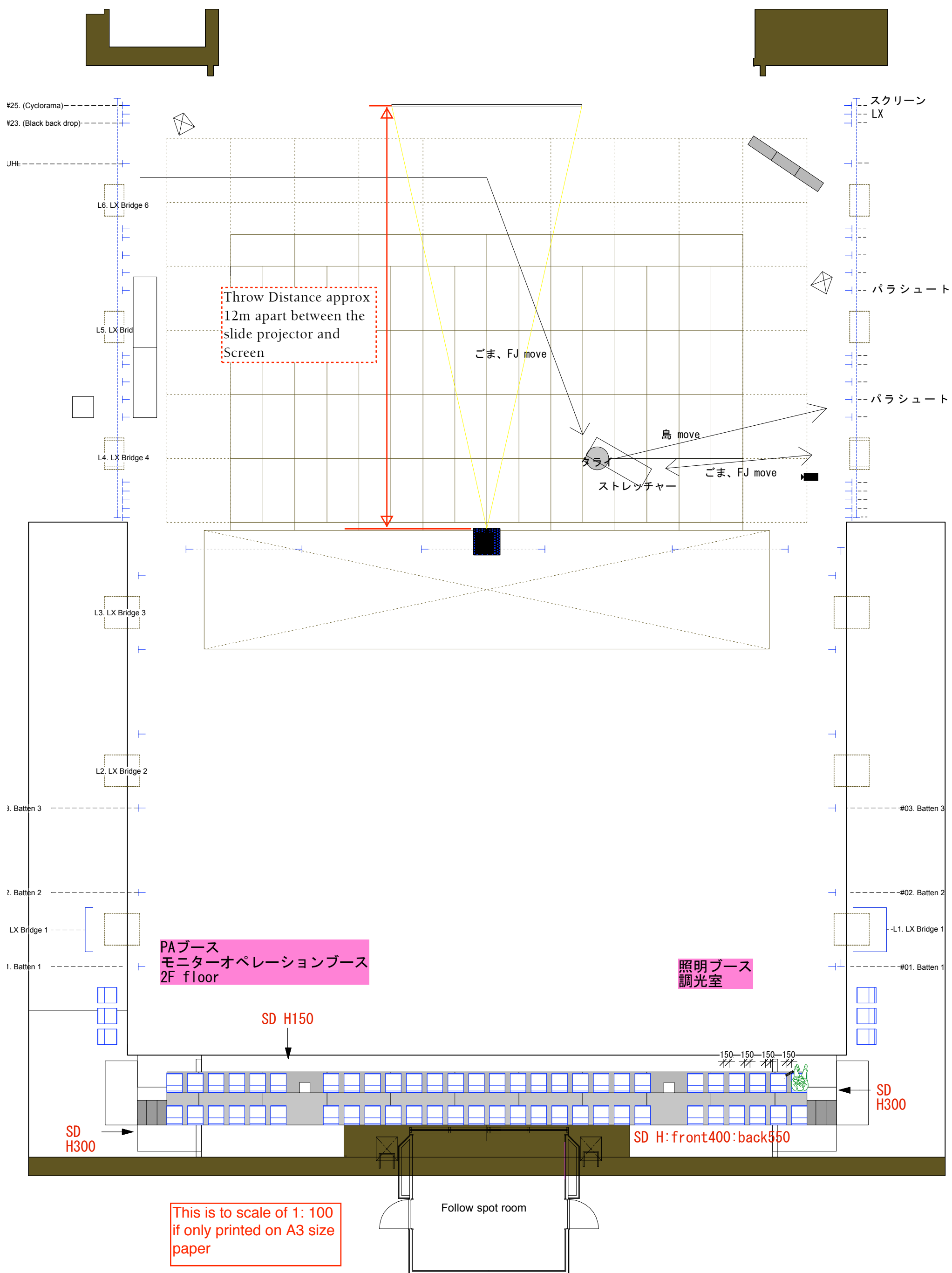


Construction Drawing  
For Park City Projector  
Stand

PARK CITY スライドPJ台座	1:20
	takuro iwata







Yamaguchi Center for Arts and Media  
Studio A Plan

scale=1:200 unit=meter 01 July 2003

7-7 Nakazono-cho, Yamaguchi, JAPAN 753-0075  
Telephone: +81 (0)83 901 2211 Fax: +81 (0)83 901 2216 E-mail: tech@ycam.jp

山口情報芸術センター  
Yamaguchi Center for Arts and Media

This is to scale of 1: 100 if  
only printed on A3 size paper

